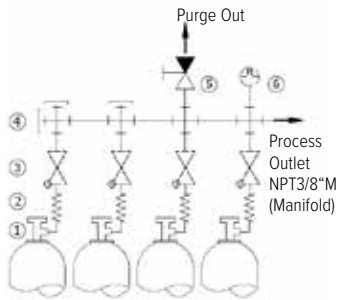


DRUVA®TEC EXTENSION HEADER KITS FOR MANIFOLD

EXTENSION | BRASS | 100m³ SERIES | HIGH PRESSURE RANGE

This extension header kits are used to increase number of high pressure inlet ports for manifolds in gas supply systems for industrial, inert, flammable, oxidizing gases and gas mixtures.
 Not suitable for corrosive and/or toxic gases and their mixtures.

Flow Schematic ETMCP0C



- 1 – Gas Cylinder
- 2 – Coil or high pressure hose (*needs to be ordered separately*)
- 3 – Check Valve
- 4 – Connection Piece
- 5 – Vent Valve
- 6 – Gauge

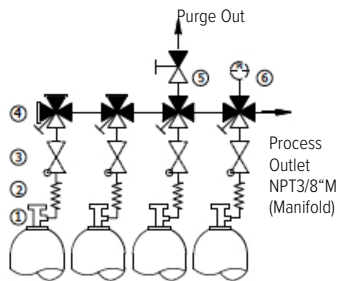
TECHNICAL SPECIFICATION

Extension Header Kits were used to connect more than one gas cylinder on each side of the manifold. It can consist of diaphragm shut-off valve, tubing, inlet and outlet connection. Upon request it can be equipped with check valves, gauges and vent valves, pressure transmitter and contact gauges. They can be delivered with up to 4 inlets. The Extension Header Kits are designed for safe handling of high purity gases.

SPECIAL FEATURES

- > Up to four additional inlet ports are possible
 - > Variable, configurable system
 - > Extension Headers are optional equipped with manual actuated diaphragm valve, non return valve, gauge, contact gauge, pressure transmitter
 - > Complete kits are available
 - > Valves - developed, tested and produced in accordance with relevant sections of ISO 10297 (including O₂ ignition test for main valve)
 - > Non Return valves -The special seat seal and the use of selected gas-wetted materials allow the use with Oxygen up to 300 bar
 - > Electrostatic chargeability test
- Fulfills requirements according to ISO 80079-36, IEC TS 60079-32-1 and German TRGS 727
 Usable in EX- areas zones 1 and 2 for gases with explosion risk group I, IIA, IIB, IIC

Flow Schematic ETMDSMF

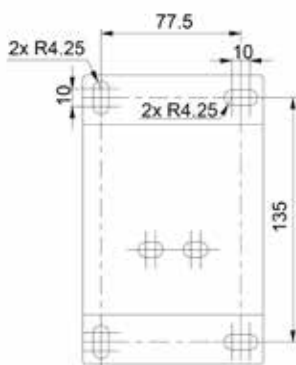


- 1 – Gas Cylinder
- 2 – Coil or high pressure hose (*needs to be ordered separately*)
- 3 – Check Valve
- 4 – Shut-off Valve (1xIN; 3xOUT)
- 5 – Vent Valve
- 6 – Gauge

TECHNICAL DATA	
Max. working pressure	300 bar
Working temperature	- 40 °C to 60°C
Nominal Flow Rate	100 m ³ / h
Material:	
Body	Brass (CW614N)
Dimensions LxDxH (max):	
	L030 (recommendet for gas cylinders) L100 (recommendet for gas bundles)
1 inlet	350 x 109 x 261 1050 x 109 x 261
2 inlets	650 x 109 x 261 2050 x 109 x 261
3 inlets	950 x 109 x 261 3050 x 109 x 261
4 inlets	1250 x 109 x 261 4050 x 109 x 261
Specials:	
	Check Valve – Type CV300 Vent Valve – Type VTLA Check Valve + Vent Valve
Gauge Type:	
	Bourdon Tube Inductive Contact I1 Reed Contact R5 Pressure Transmitter Ex Pressure Transmitter Non-Ex

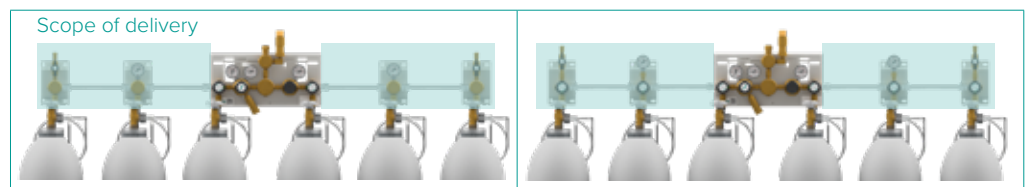
TECHNICAL DATA – TUBE	
Material	Stainless Steel 1.4404 / 316L
Outside Diameter	1/2"
Wall thickness	0,065"
Gas wetted surface finish	Outer surface Ra ≤ 1,0 μm Inner surface Ra ≤ 0,8 μm
Cleaning	free of oil and grease acc. to ASTM G93 11.4.3.1 - Level AA

Drilling theme



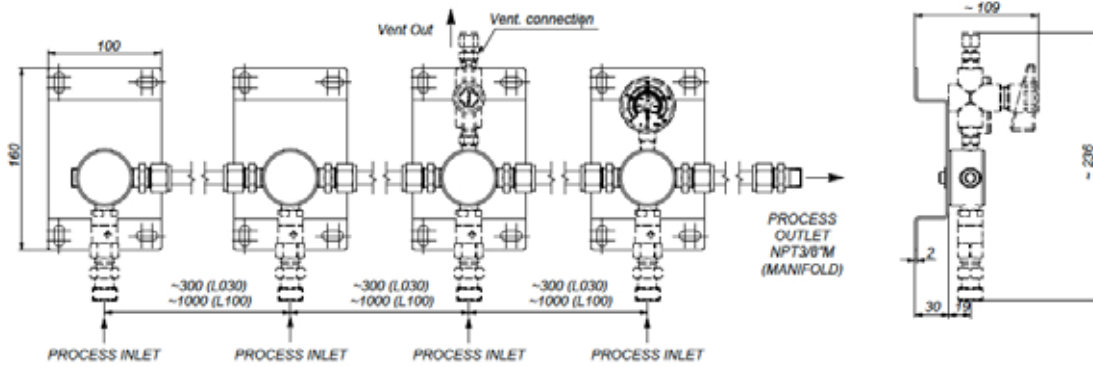
Extension with Connection Piece

Extension with 4-port diaphragm shut-off valve

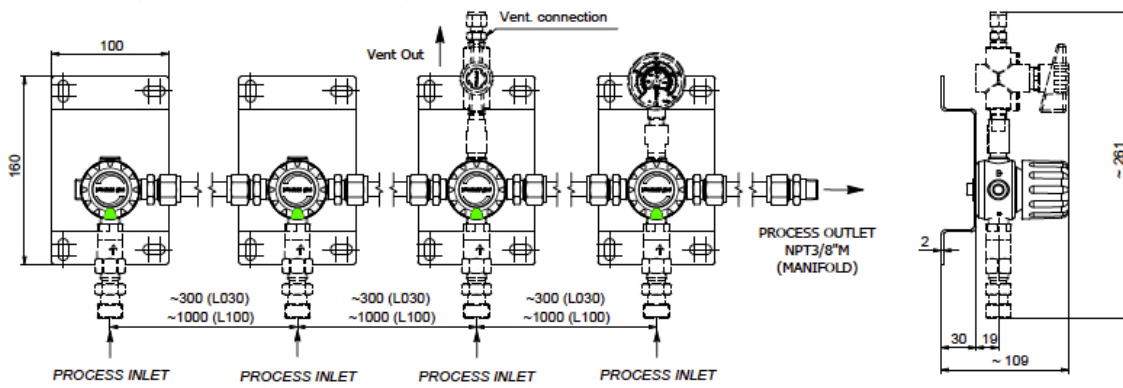


VARIANTS

Type ETMCPOC (extension with connection piece)



Type ETMDSMF (extension with shut-off valve)



ORDER CODE

Example Extension Header | TEC Line | Brass | 100 m³ Series | High Pressure Range

ETMCPOC ETMDSMF	L	2	V	GX	01	L100	N38F	N14F
	Porting Orientation	Extension Level	Specials	Working Pressure	Pressure Indicator	Length	Process Inlet Connection	Vent Connection
	R [4 Port] (1 In 3 Out 5 Out 7 Out)	1 one inlet	0 no specials	F4 60 bar	01 Without (plugged)	L030 300 mm	N38F NPT3/8" female	see list of possible connections
	L [4 Port] (1 Out 3 Out 5 In 7 Out)	2 two inlets	C Check Valve	FX 200 bar	BT Bourdon Tube gauge	L100 1000 mm	E2MR G3/8" male EN560 right	
		3 three inlets	V Vent Valve	GX 300 bar	I1 Inductive Contact Gauge I1		W2ML W21,8x1/14" male left	
		4 four inlets	W Check Valve + Vent Valve		R5 Reed Contact Gauge R5		W2MR W21,8x1/14" male right	
					PT Pressure Transmitter			
					PX Pressure Transmitter Ex			

Order code (as described above) without special characters or spaces! Example for a complete order code **ETMCP0CL2VGX01L100N38FN14F**

LIST OF VENT CONNECTIONS

N14F - NPT1/4 INCH FEMALE

- M06B - COMPRESSION METRIC 6 MM BRASS
- M08B - COMPRESSION METRIC 8 MM BRASS
- M10B - COMPRESSION METRIC 10 MM BRASS
- M12B - COMPRESSION METRIC 12 MM BRASS
- M06S - COMPRESSION METRIC 6 MM SS
- M08S - COMPRESSION METRIC 8 MM SS
- M10S - COMPRESSION METRIC 10 MM SS
- M12S - COMPRESSION METRIC 12 MM SS

- IX4B - COMPRESSION IMPERIAL 1/4" BRASS
- IX6B - COMPRESSION IMPERIAL 3/8" BRASS
- IX8B - COMPRESSION IMPERIAL 1/2" BRASS
- IX4S - COMPRESSION IMPERIAL 1/4" SS
- IX6S - COMPRESSION IMPERIAL 3/8" SS
- IX8S - COMPRESSION IMPERIAL 1/2" SS



Link to online product configurator